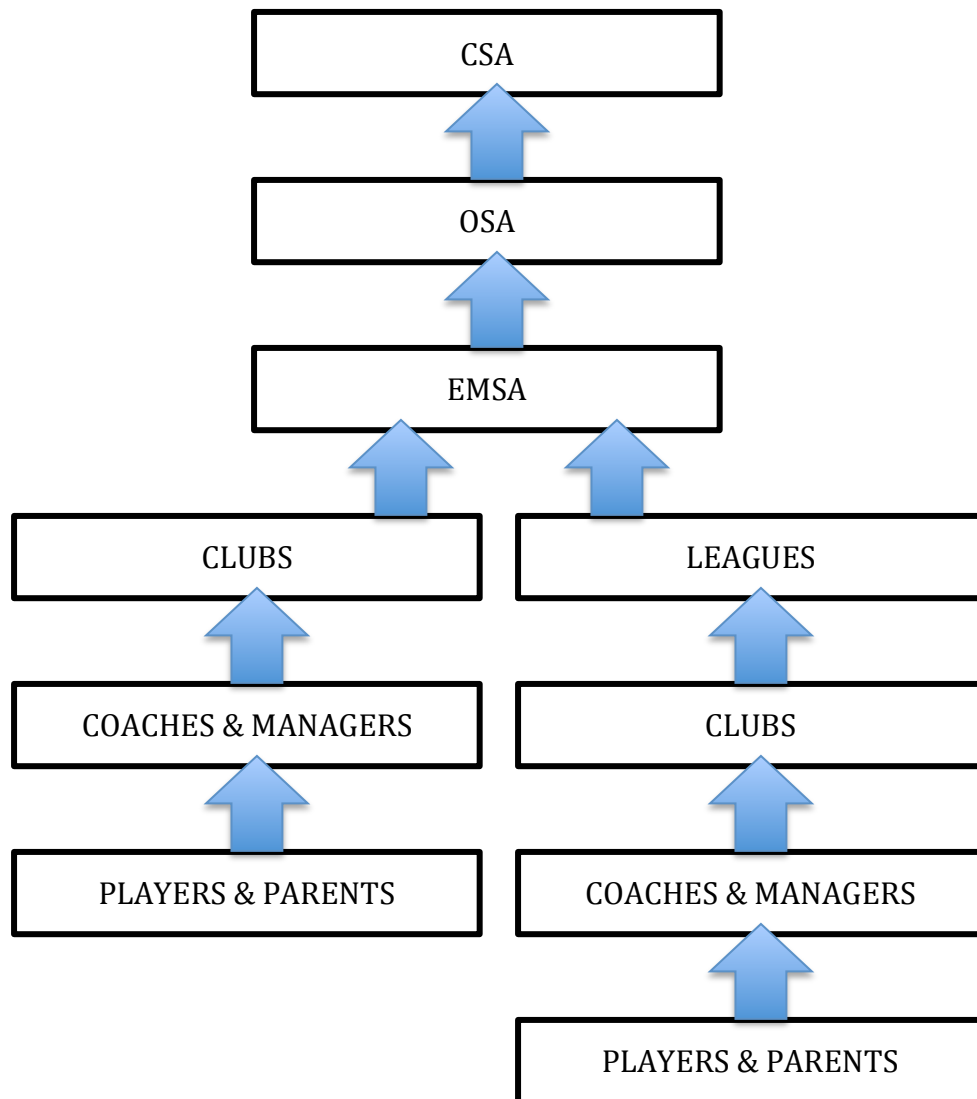


## CHAIN OF COMMAND & OPERATIONS



### From the bottom of the chain:

1. Players and parents communicate with coaches or managers, as they are members of the club team.
2. Coaches and managers communicate with the club or league executive, as they are members of the club.
3. Clubs or League executive communicate with EMSA, as they are members of EMSA
4. EMSA communicates with the OSA, as they are members of the OSA.
5. OSA communicates with the CSA.

***At no time should players or parents be sent to, or told to call the EMSA office. Players and/or parents are the clubs responsibility to deal with, unless they have been called in for a discipline hearing by EMSA or to have discipline recorded in the player book.***